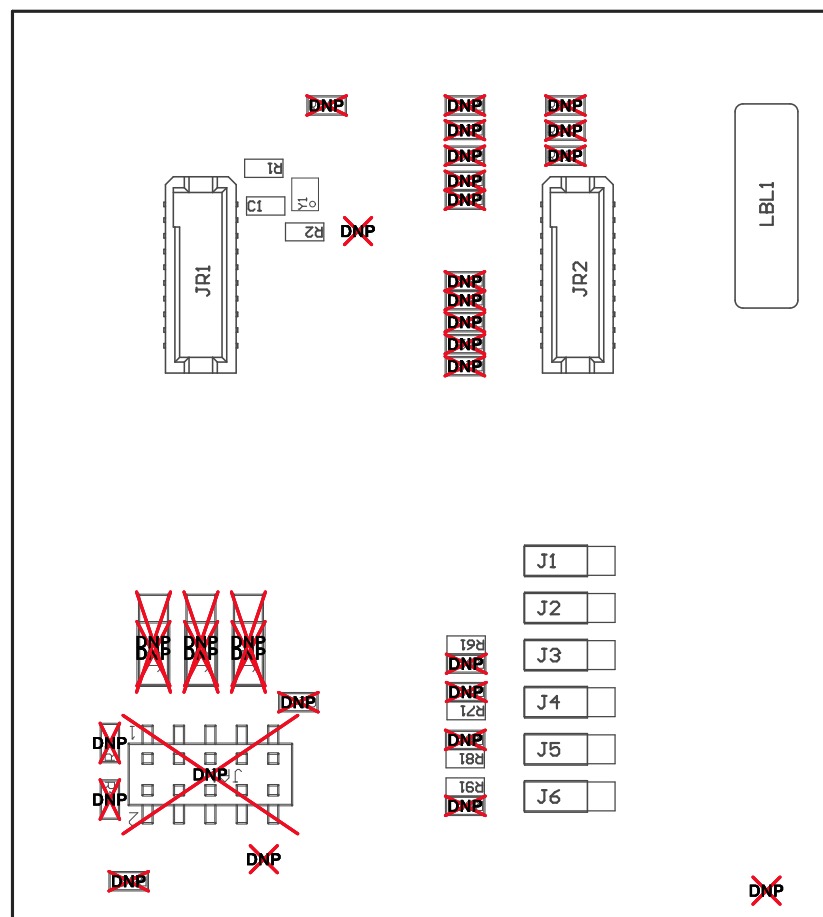
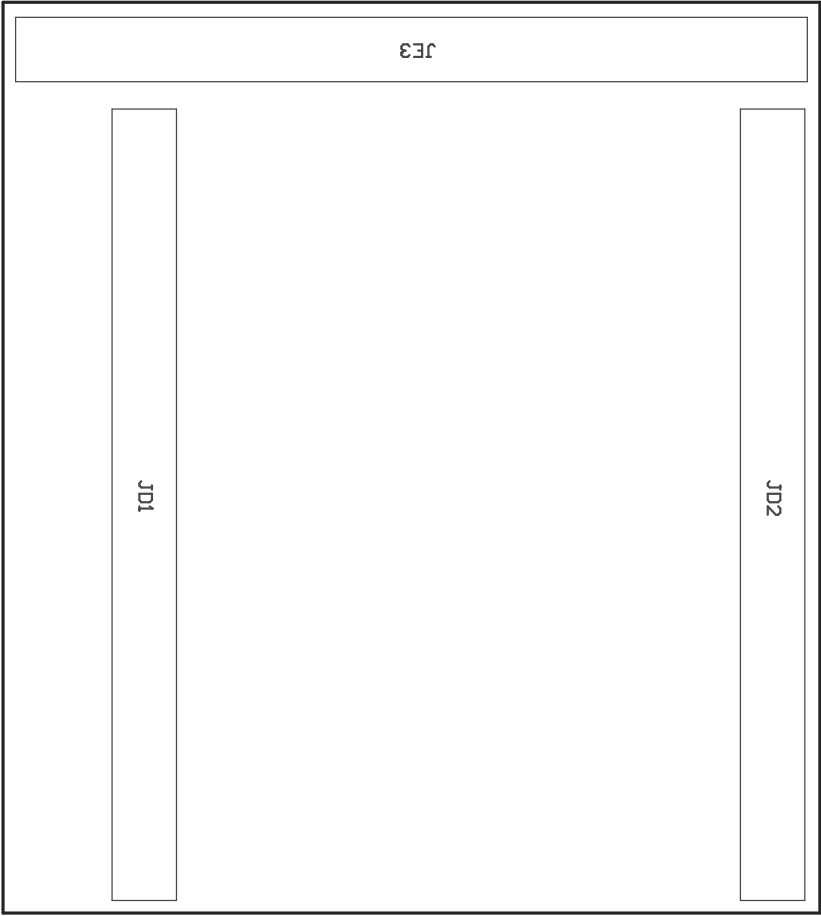


ZZ4 ■ These assemblies must comply with workmanship standards IPC-A-610 Class 2, unless otherwise specified.



ASSEMBLY VARIANT: 000

PCB VIEWED FROM TOP SIDE	BOARD #: CC256XEM-STADAREV: v1.0	SUN REV: Not In VersionControl
PLOT NAME = Top Assembly Drawing	GENERATED : 6/23/2015 8:38:24 AM	TEXAS INSTRUMENTS



COMPONENTS MARKED 'DNP' SHOULD NOT BE POPULATED.
ASSEMBLY VARIANT: 000

PCB VIEWED FROM BOTTOM SIDE	BOARD #: CC256XEM-STADAREV: v1.0	SUN REV: Not In VersionControl
PLOT NAME = Bottom Assembly Drawing	GENERATED : 6/23/2015 8:38:25 AM	TEXAS INSTRUMENTS